

ARTS 7000

Avionics Radio Test System

Laversab is delighted to introduce our new multifunction, WiFi-enabled Avionics Radio Test System - ARTS. The ARTS 7000 is designed to meet all radio test systems requirements in **one box**.

Uniquely, the ARTS 7000 integrates with Laversab Air Data products to enable **fully integrated Altitude testing**.

The ARTS 7000 is designed to **reduce upfront costs, simplify aircraft testing**, and cover all current & future **radio test requirements**.



With an intuitive user interface and quick setup, the ARTS 7000 cuts down test time, so your aircraft gets back in the air faster. The ARTS is user-configurable and easily expandable to include both current and future avionics. Standard capabilities include Comm, Nav, DME, ELT and ATC (including ADSB). Optional capabilities are UAT and TCAS. The ARTS 7000 is built to test any airborne platform— from General Aviation to Commercial Airlines – including helicopters and military applications.






- Service & Calibration Centers across the world
- 4-DAY turn on calibrations
- AOG Loaner Units available



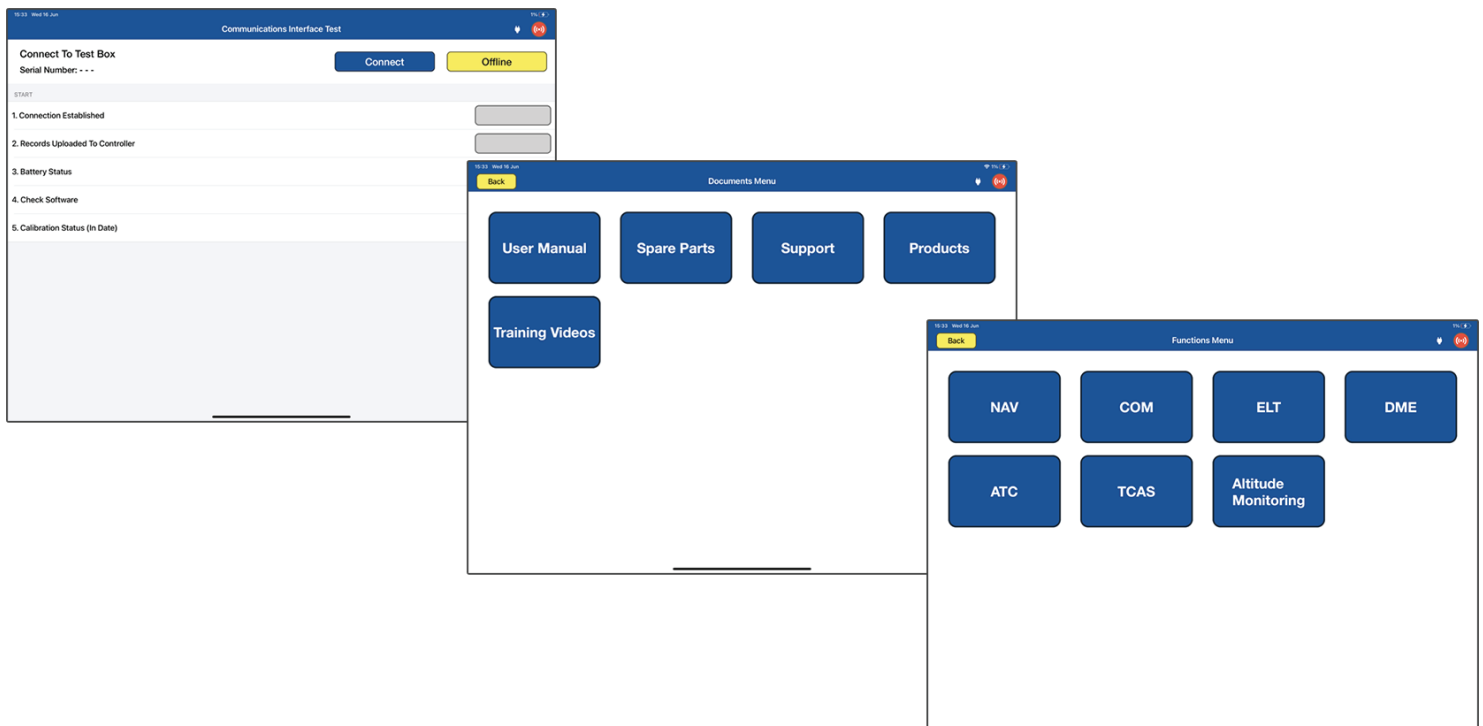
- Technical support & training INCLUDED
- 3-YEAR standard warranty
- FREE Operational SW Updates
- Upgrades available to expand capabilities

KEY FEATURES

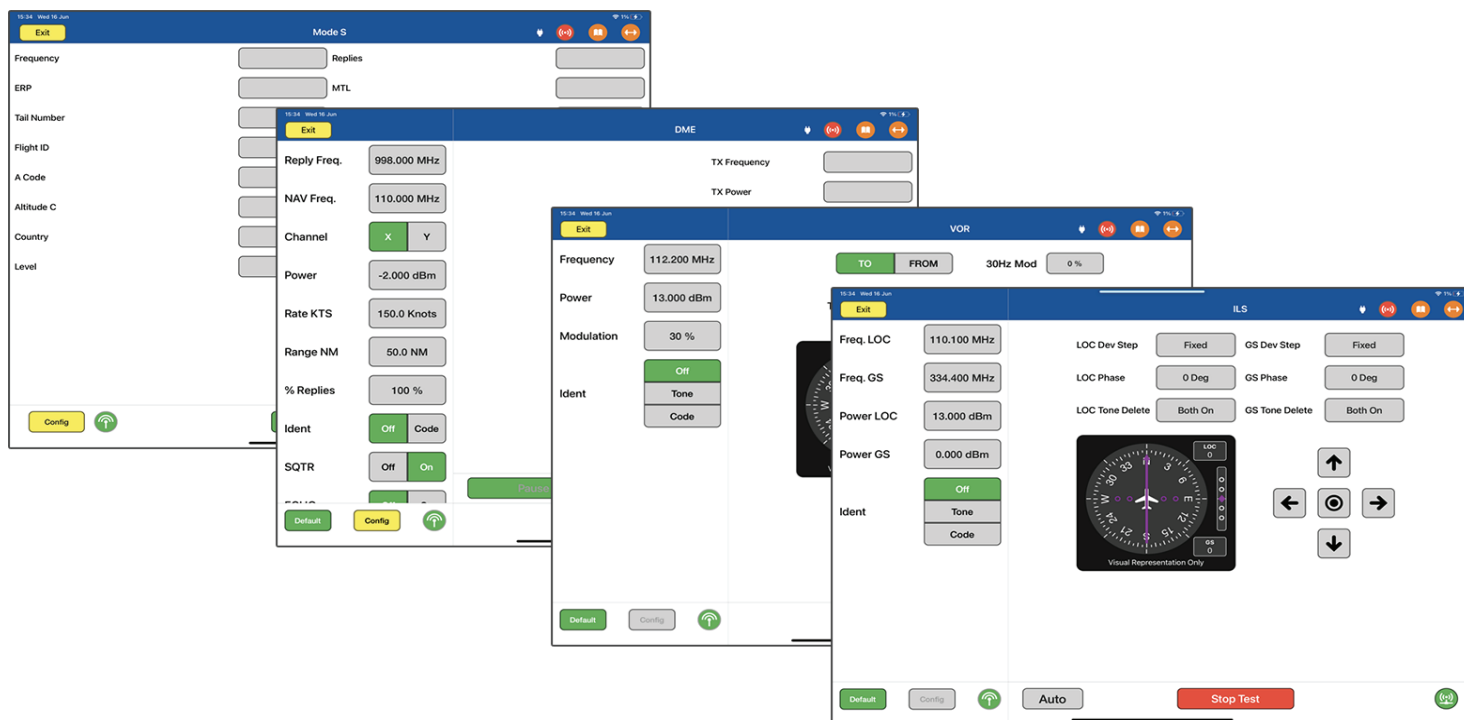
		
Multi-function capability in a single box	Quick setup. Wireless control of test-set	Integrated self-test & fault-finding tools.
Configurable to meet user-specific requirements – reduces cost	Control with iPad or other tablet. Optional: Wired Remote Controller	Built in quick confidence check
Expandable within same system for additional functions	Downloadable software upgrades	Integrates Mode S with Laversab ADTS for altimeter checks.
Preset and user configurable test scenario and parameters	Secure Wi-Fi network generated by test set	Fully Integrated ILS and MKR scenario
Removable Battery to test aircraft anywhere	Easy export of stored results	Automatic VOR scenario
Worldwide service and support	Transportable system with rugged enclosure	Fully Integrated DME and VOR scenario

A new concept in Tester/Aircraft/Technician integration.

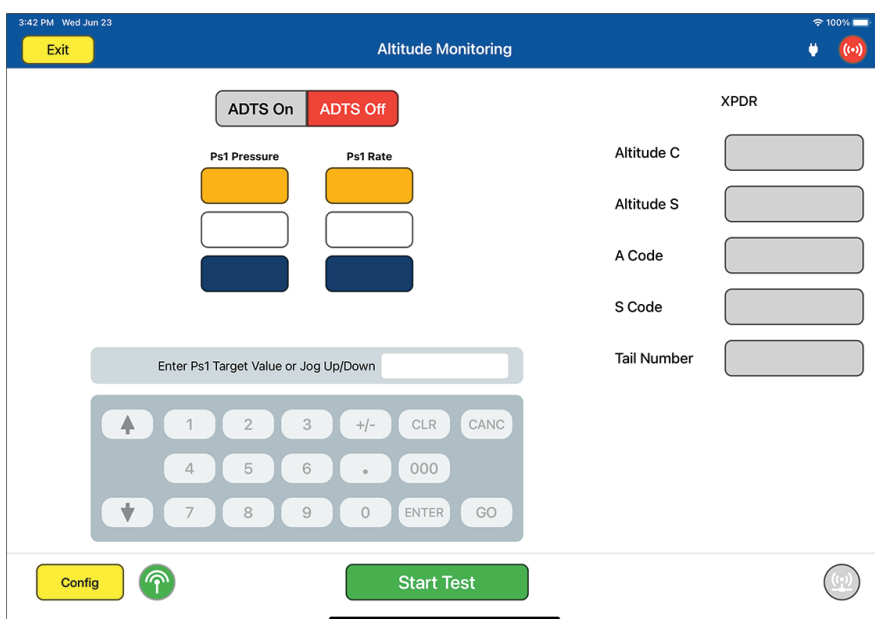
Using commercially available tablets to control the ARTS enables a cost-effective and simple test process. With clear menus, hot keys, predefined scenarios, customizable limits, and intuitive functions, the ARTS is easy to learn and use.



Each test function has a dedicated page giving the operator full access to test parameters, configuration, and results. All test functions can be setup and completed by a single technician. The familiarity of tablets and the simplicity of the ARTS software minimizes training time. If you can use a tablet, you can operate the ARTS.



From simple Go/No-Go tests to a full engineering diagnostic – the ARTS provides all the capabilities, speed and details that you need.



Unique Feature:

Altimeter checks and simultaneous Mode S output tests (FAR 91.413) are simplified by controlling a Laversab ADTS through the ARTS 7000.

CAPABILITY & BASE SPECIFICATIONS

<i>COMMUNICATIONS</i>	UHF VHF HF SSB SelCal VDL Mode 2 (coming soon)
<i>NAVIGATION</i>	VOR ILS Localizer & Glide Slope Marker Beacon
<i>ELT</i>	121.5 / 243 / 406 MHz
<i>DME</i>	DME DME & ILS DME & VOR
<i>TRANSPONDER</i>	Mode S ATCRBS Mode A & C ADS-B OUT ADS-B IN (coming soon) UAT (coming soon) <i>optional</i>
<i>TCAS (optional)</i>	TCAS 1 (coming soon) <i>optional</i> TCAS 2 (coming soon) <i>optional</i> ACAS (coming soon) <i>optional</i>
<i>TOOLS</i>	VSWR (coming soon) Distance to Fault (coming soon)
<i>AIR DATA INTEGRATION</i>	ARTS-7000 & Laversab ADTS integration (coming soon)
<i>POWER REQUIREMENT</i>	90-260 VAC, 47-65 Hz or 28 VDC, 25 W Or Removable battery: 8-hour operation
<i>INTERFACES</i>	Wi-Fi, RS232, USB
<i>DIMENSIONS & WEIGHT</i>	Main unit: 22" x 14" x 9"; 30 lbs.
<i>ENVIRONMENTAL</i>	Operating temp: -20° to 60°C Storage temp.: -40° to 75°C Humidity: 5 to 100%
<i>Please see full technical Data sheet for details.</i>	

ARTS 7000